

Charles Overstreet
DB 841 P 258

Old Foundation, Chimney,
Dish/Antenna Not Shown

Joseph W. Main
DB 522 P 303

5/8" Steel Rod with Cap
Stamped CSA CA560LS

5/8" Steel Rod with Cap
Stamped CSA CA560LS

Traylor R. Riley
DB 602 P 290

5/8" Steel Rod with Cap
Stamped CSA CA560LS

5/8" Steel Rod with Cap
Stamped CSA CA560LS

OUT
AUCTION LOT 9
0.9 ACRES

OUT

OUT

OUT

AUCTION LOT 6
1.8 ACRES

AUCTION LOT 5
0.9 ACRES

AUCTION LOT 4
0.8 ACRES

AUCTION LOT 3
0.8 ACRES

AUCTION LOT #3

AUCTION LOT 2
0.8 ACRES

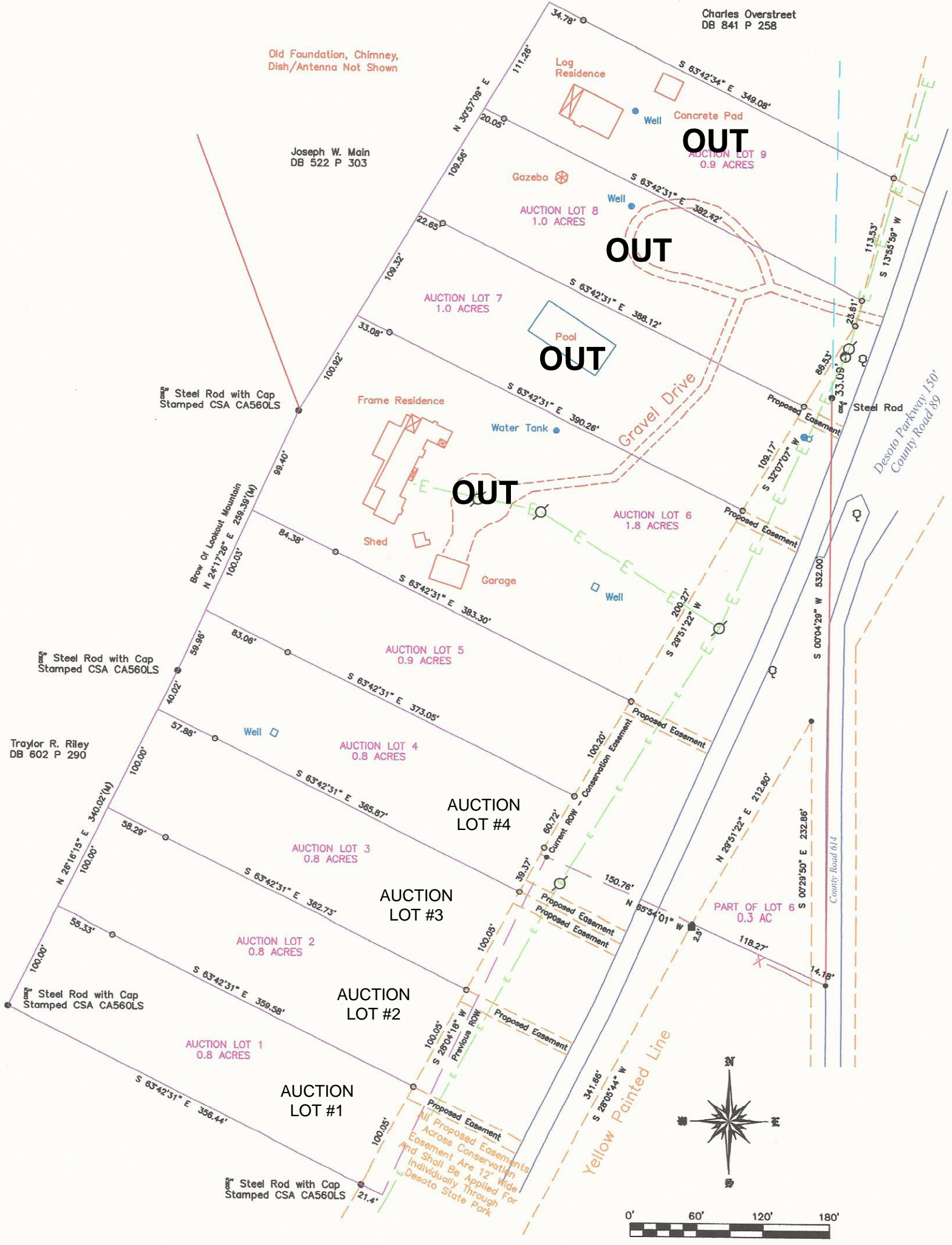
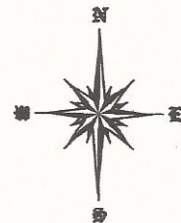
AUCTION LOT #2

AUCTION LOT 1
0.8 ACRES

AUCTION LOT #1

Proposed Easement
All Proposed Easements
Across Conservation
Easement Are 12' Wide
And Shall Be Applied For
Individually Through
Desoto State Park

Yellow Painted Line



County Road 614

Desoto Parkway 150
County Road 89